



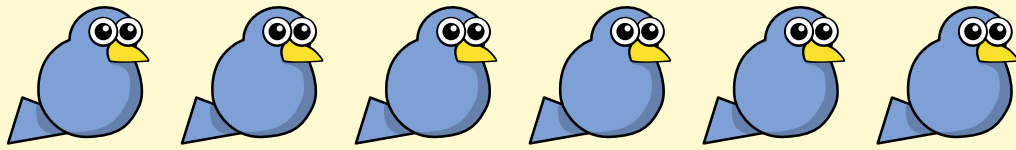
ADDITION AND SUBTRACTION (WITHIN 20)

White
Rose
Maths



From White Rose Maths schemes for Year 1 Spring Term
BLOCK 1 - ADDITION AND SUBTRACTION (WITHIN 20)

1 There are 6 birds in a tree.



5 more birds fly into the tree.

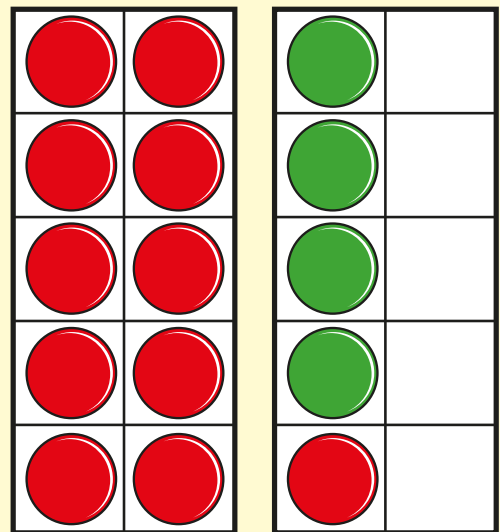


How many birds are there now?

birds

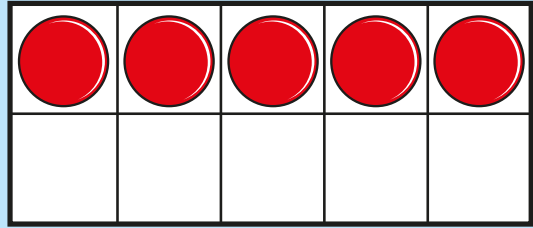
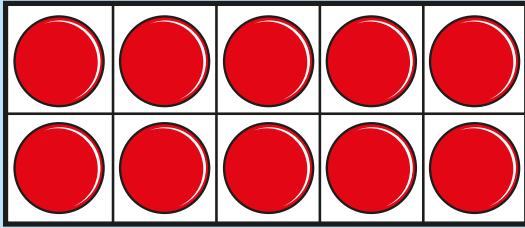
2 Complete the number sentence.

$$11 + 4 = \square$$

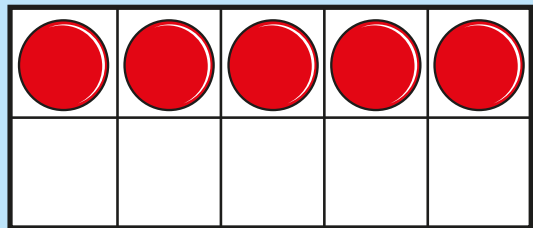
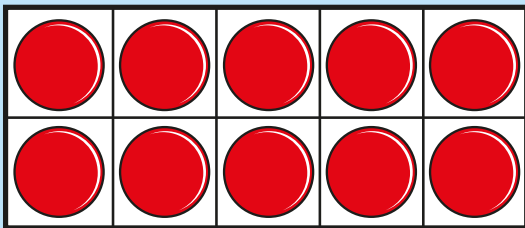


3

Work out $15 + 5 =$



Work out $15 - 5 =$



4

Match the number sentences.

One has been done for you.



$15 + 2$

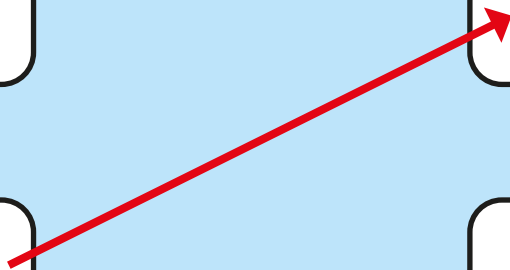
$10 + 3$

$3 + 10$

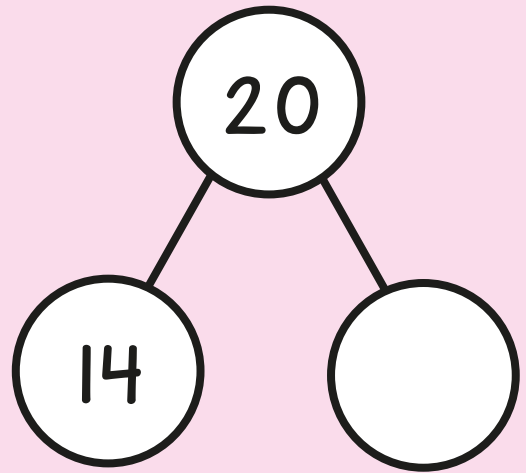
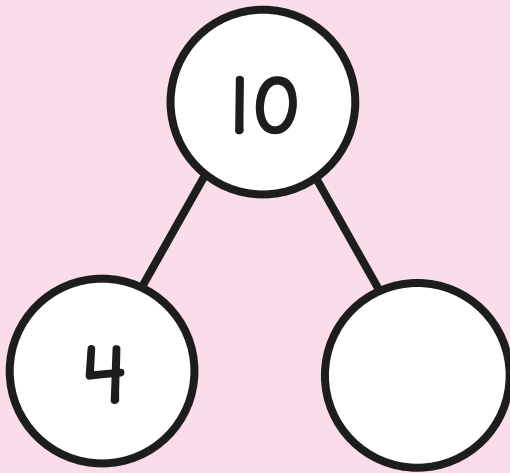
$12 + 5$

$13 + 4$

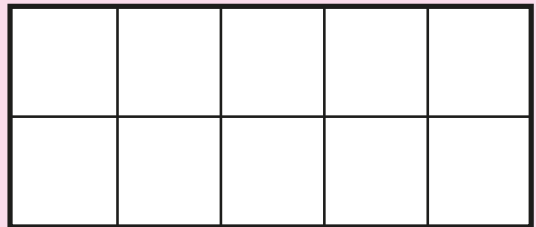
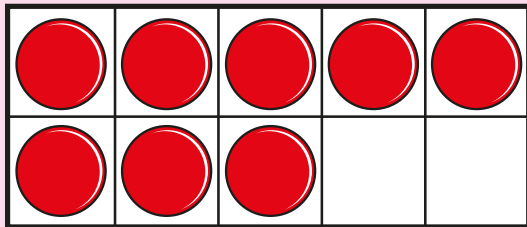
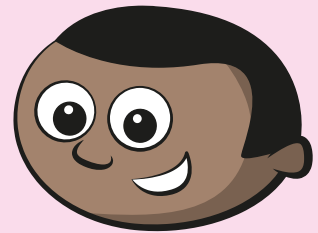
$12 + 5$



5 Complete the part-whole models.



6 Mo has 8 counters.



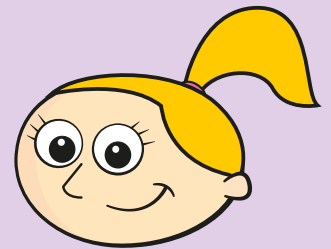
He adds 8 more counters.

How many counters does he have now?

counters

7 Work out $7 + 9 =$

8 Eva has 2 bags of marbles.
She has 20 marbles altogether.
Circle the bags that Eva has.



9 Complete the number sentences.

$$16 + 3 > 16 + \square$$

$$16 + \square < 19$$

Answers



1 11 birds

2 $11 + 4 = 15$

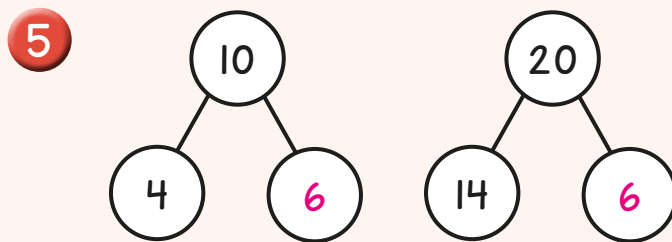
3 $15 + 5 = 20$

$15 - 5 = 10$

4

$15 + 2$	$10 + 3$
$3 + 10$	$12 + 5$
$13 + 4$	$12 + 5$

Red arrows connect $15 + 2$ to $12 + 5$, $3 + 10$ to $12 + 5$, and $13 + 4$ to $10 + 3$.



6 16 counters

7 16



9 $16 + 3 > 16 + \square$ (0, 1 or 2)

$16 + \square < 19$ (0, 1 or 2)





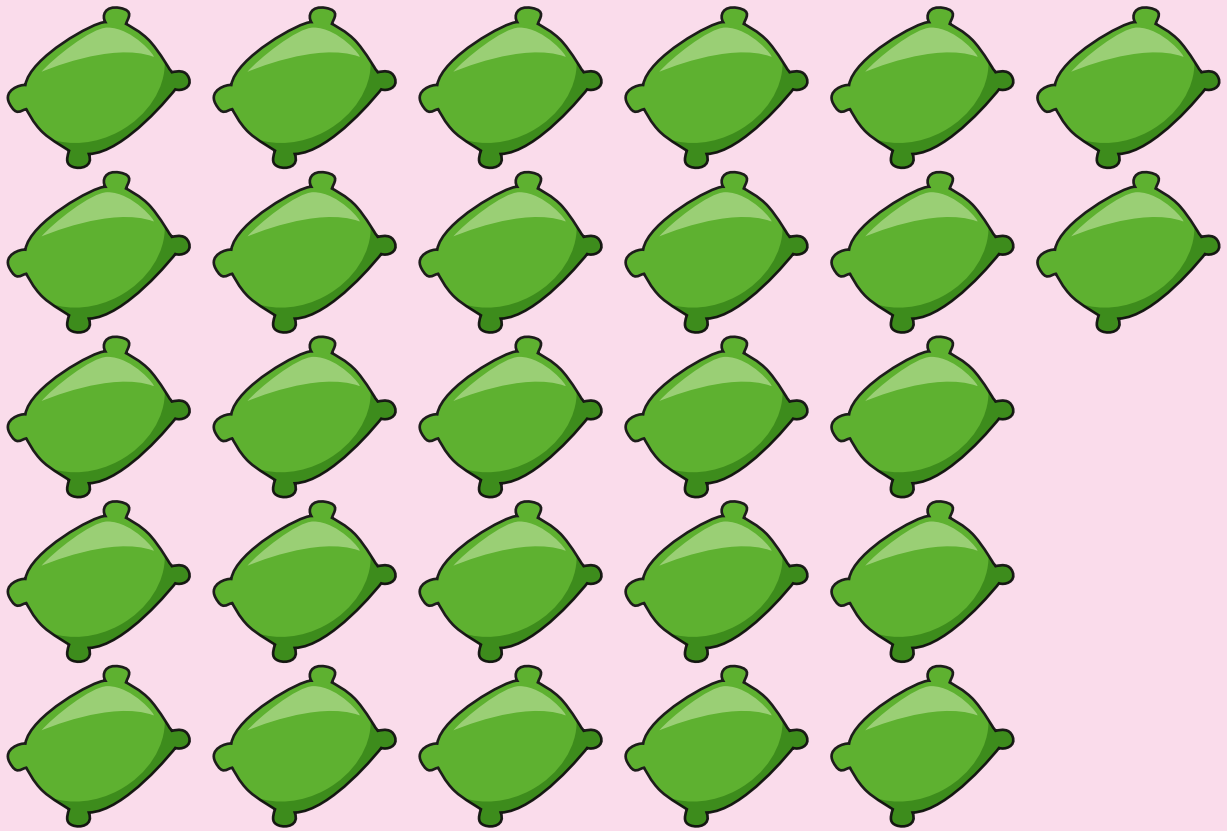
PLACE VALUE (WITHIN 50)

White
Rose
Maths



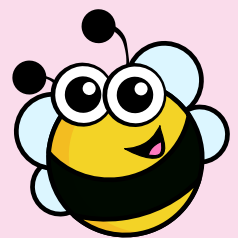
From White Rose Maths schemes for Year 1 Spring Term
BLOCK 2 - PLACE VALUE (WITHIN 50)

1 How many beanbags are there?



beanbags

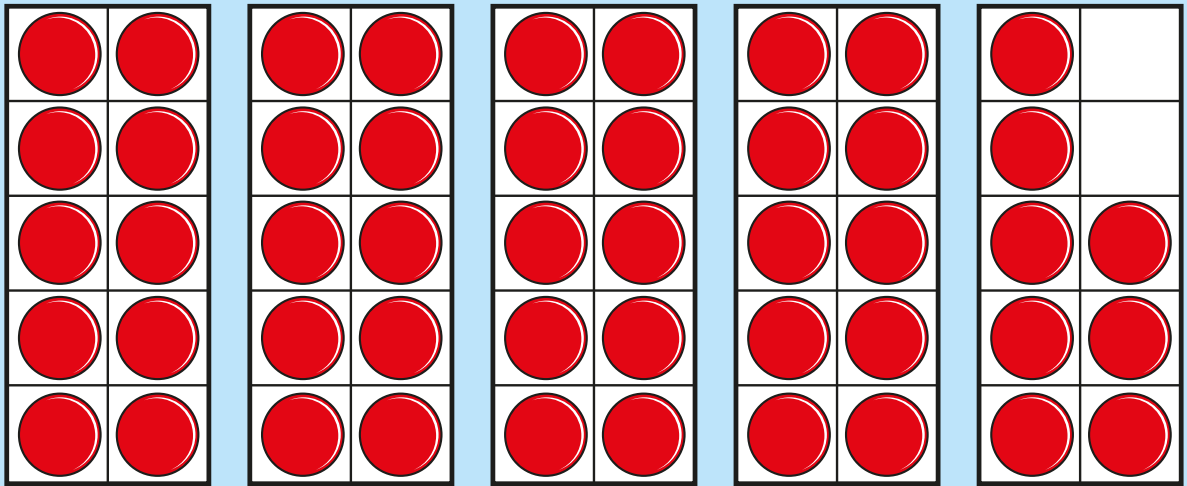
2 Fill in the missing numbers.



34	35	36	37		
----	----	----	----	--	--

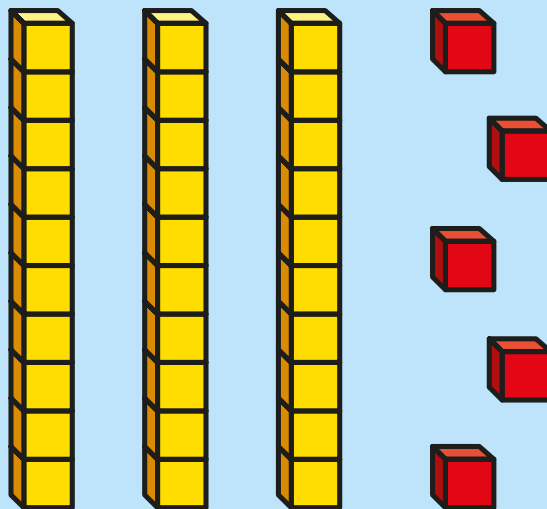
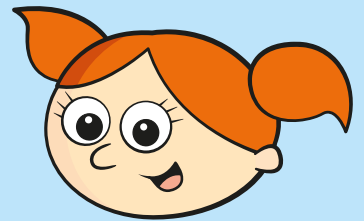
26	27	28			
----	----	----	--	--	--

3 How many counters are there?



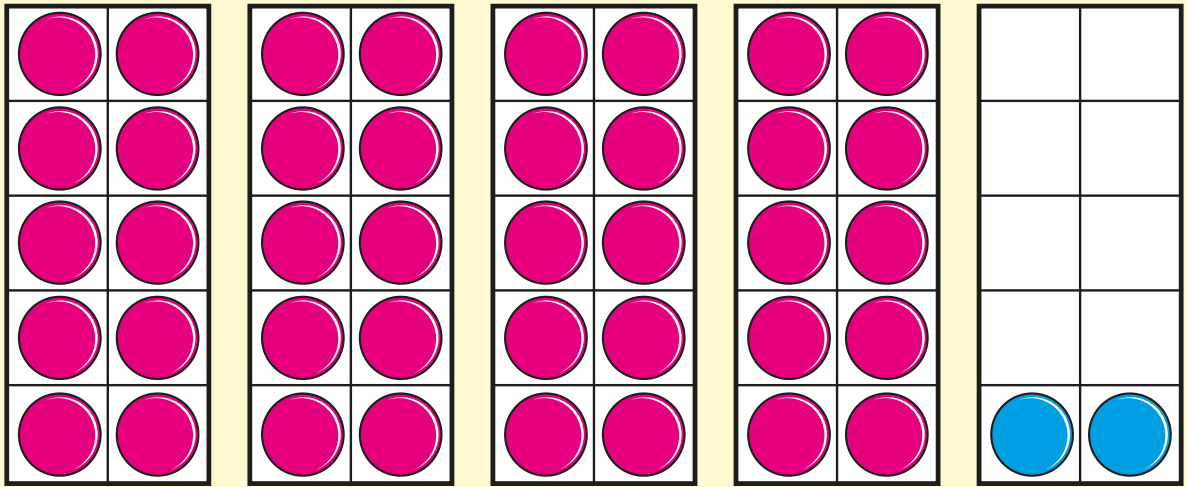
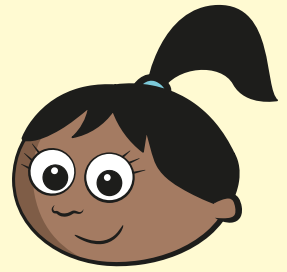
counters

4 Alex makes a number.



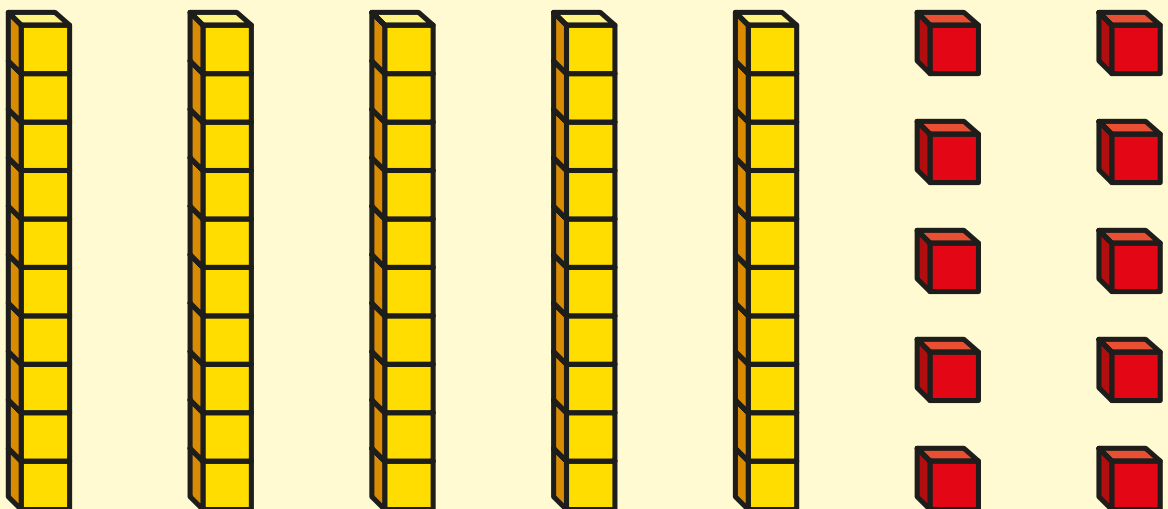
What number has Alex made?

5 Sam makes a number.



What number has Sam made?

6 Circle 26



7 Complete the sentences.

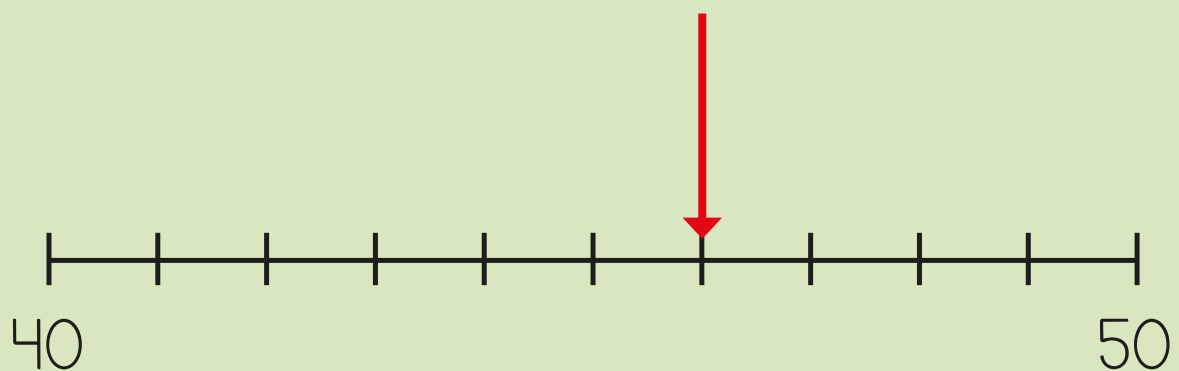


1 more than 32 is

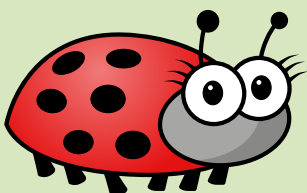
1 less than 40 is

46 is 1 less than

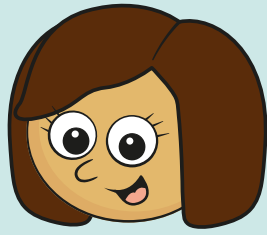
8 Here is a number line.



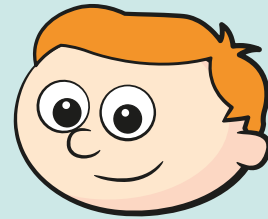
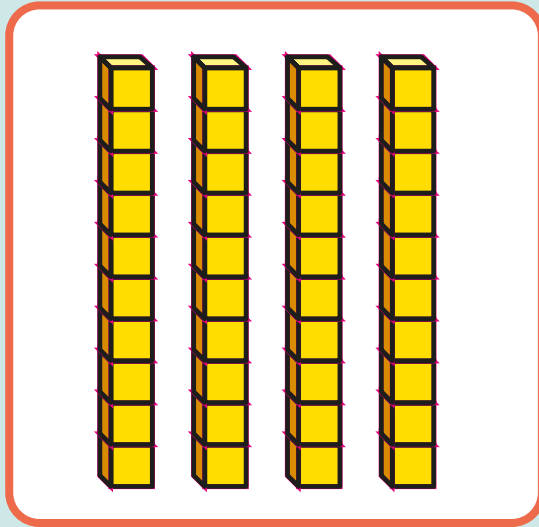
What number is the arrow pointing to?



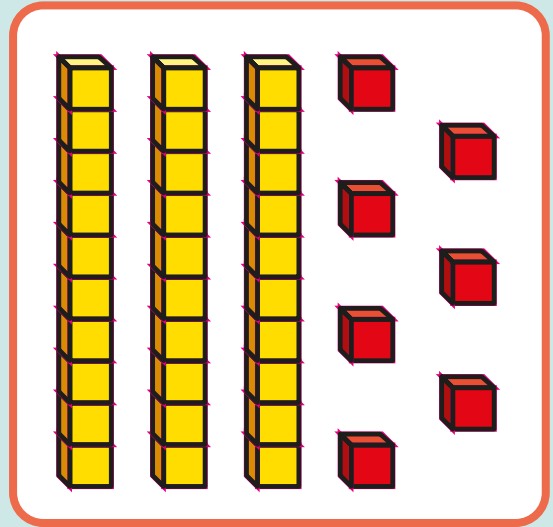
9 Kim and Ron have each made a number.



Kim's number



Ron's number



Who has made the smallest number?

Circle your answer.

Kim

Ron

They have made
the same number.

10 Circle the greatest number.

42

47

39

Answers



1 27 beanbags

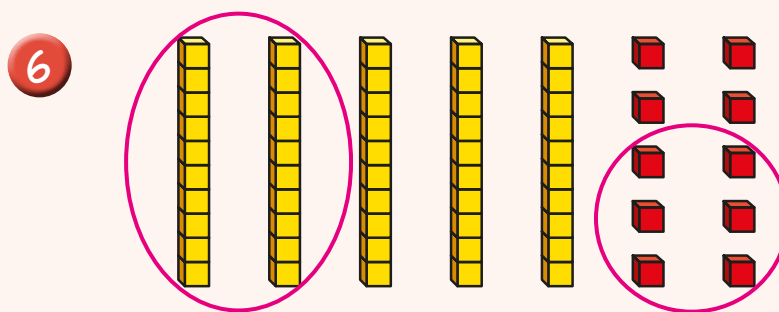
34	35	36	37	38	39
----	----	----	----	----	----

26	27	28	29	30	31
----	----	----	----	----	----

3 48 counters

4 35

5 42



7 1 more than 32 is **33**

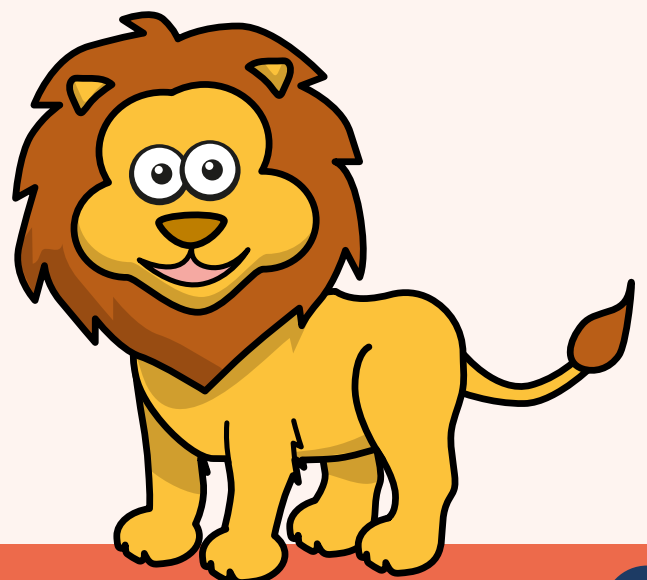
1 less than 40 is **39**

46 is 1 less than **47**

8 46

9 Ron

10 **47**





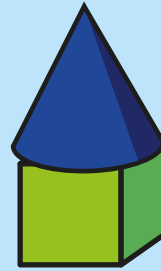
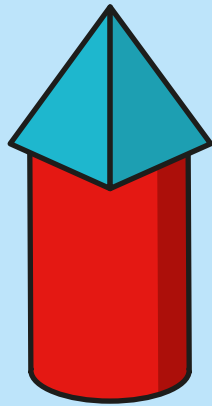
LENGTH AND HEIGHT

White
Rose
Maths



From White Rose Maths schemes for Year 1 Spring Term
BLOCK 3 - LENGTH AND HEIGHT

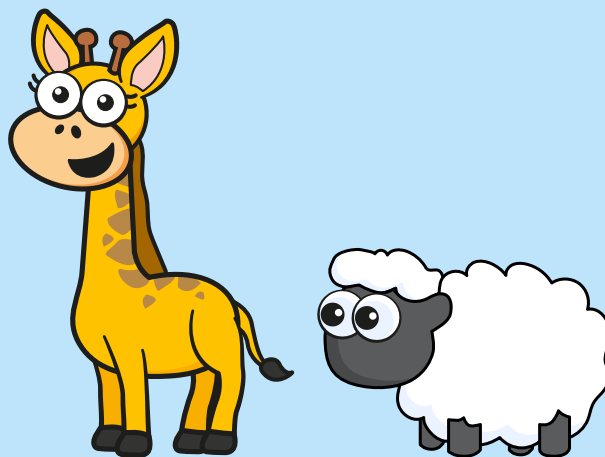
1 Circle the shortest tower.



2 Choose a word to complete the sentence.

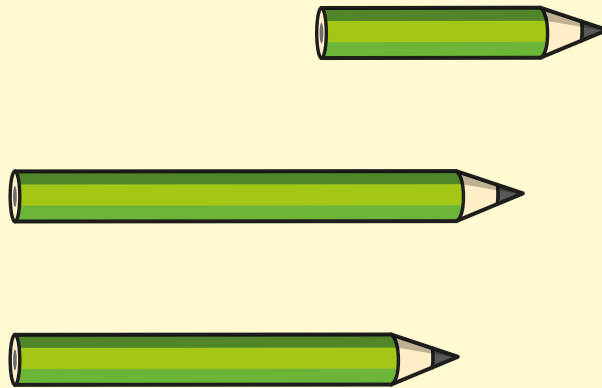
shorter

taller

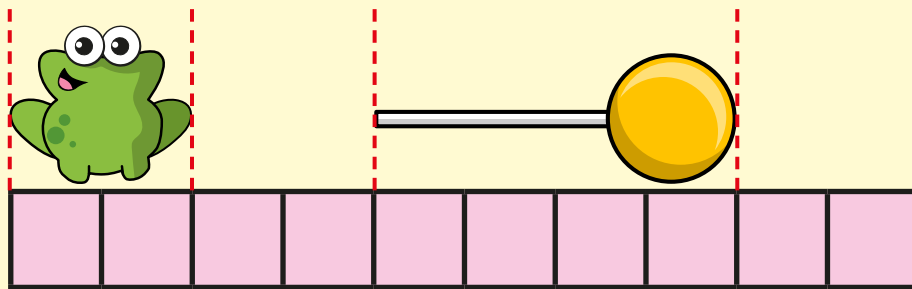


The giraffe is _____ than the sheep.

3 Circle the longest pencil.



4 Dexter is measuring using squares.



How many squares long is the lollipop?

squares

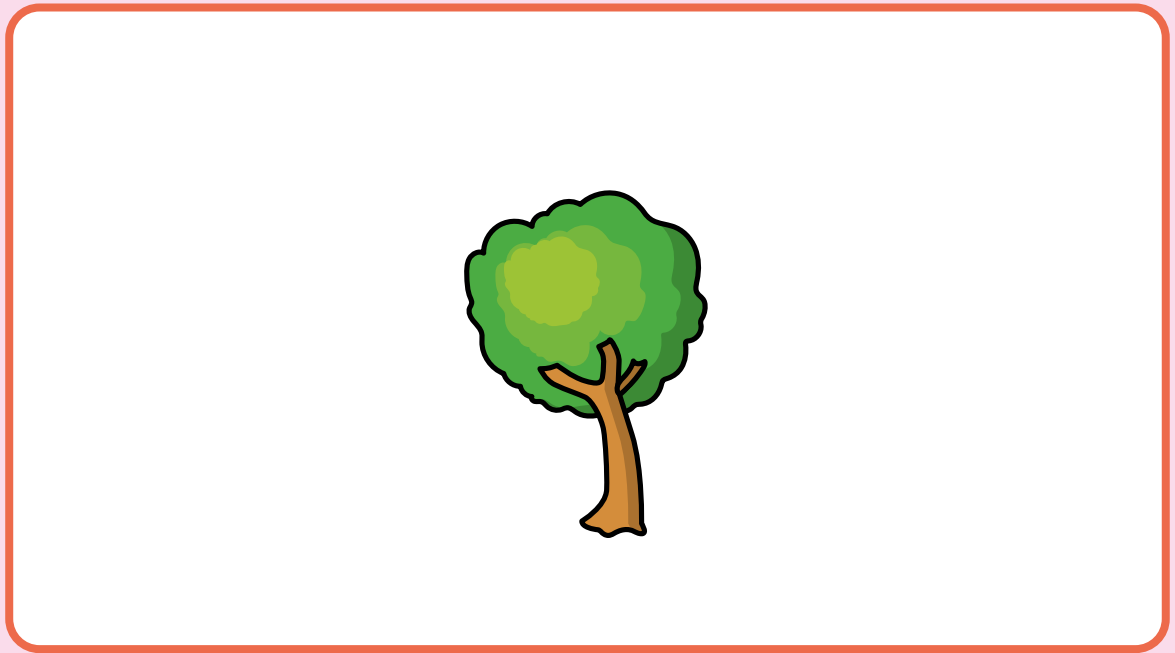
How many squares long is the frog?

squares

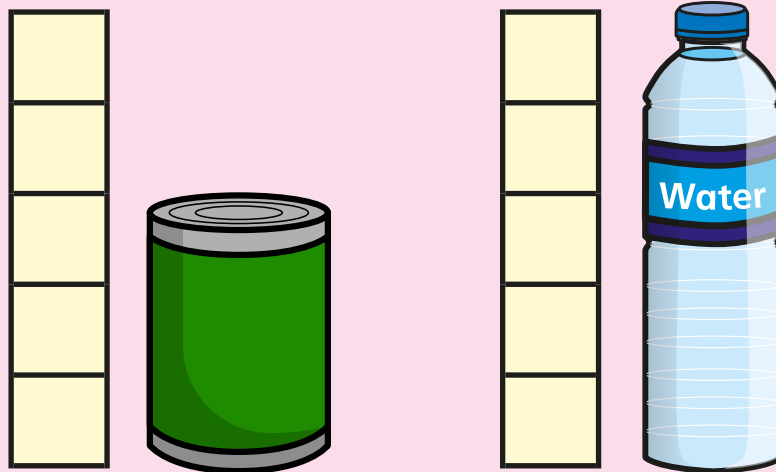
How much longer is the lollipop than the frog?

squares

- 5 Draw a taller tree and a shorter flower.



- 6 Tick the correct sentence.



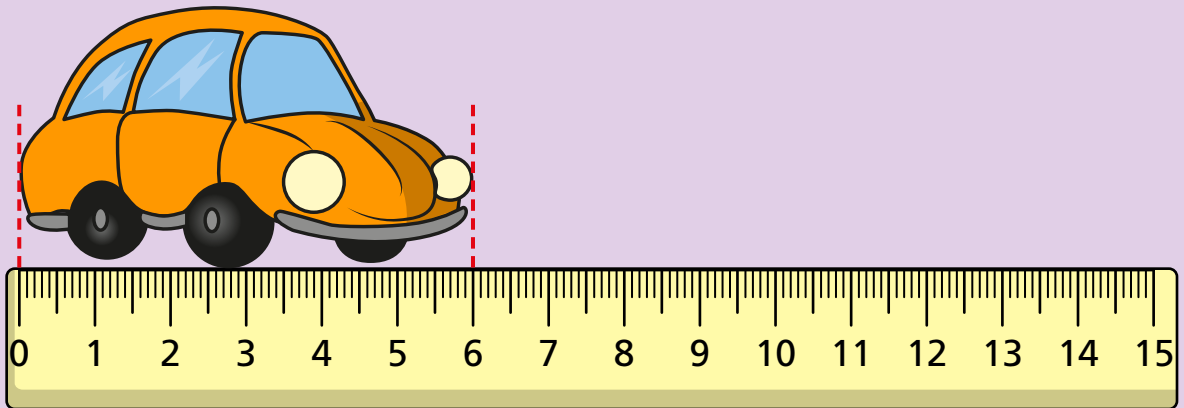
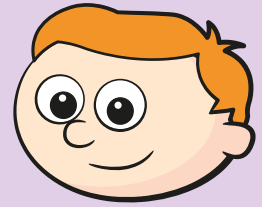
The tin is taller than the bottle.

The tin is 5 squares tall.

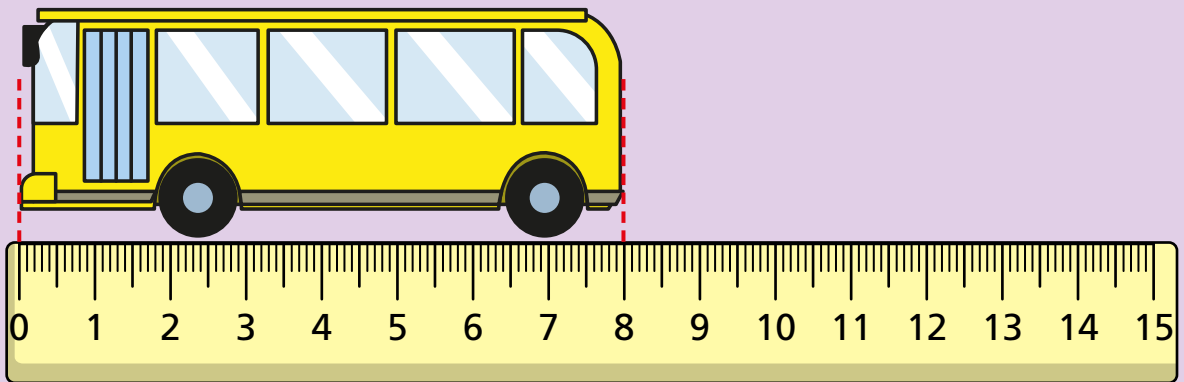
The bottle is 2 squares taller than the tin.

7

Ron measures some objects.



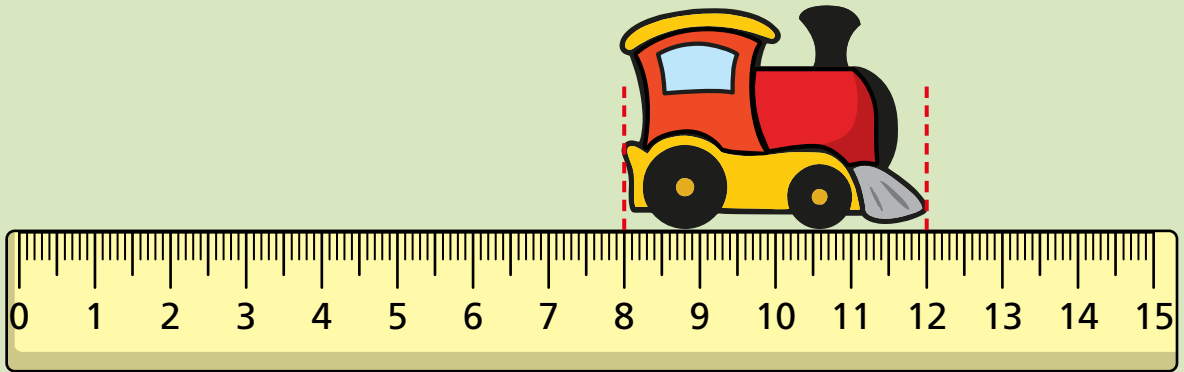
The car is cm long.



The bus is cm long.

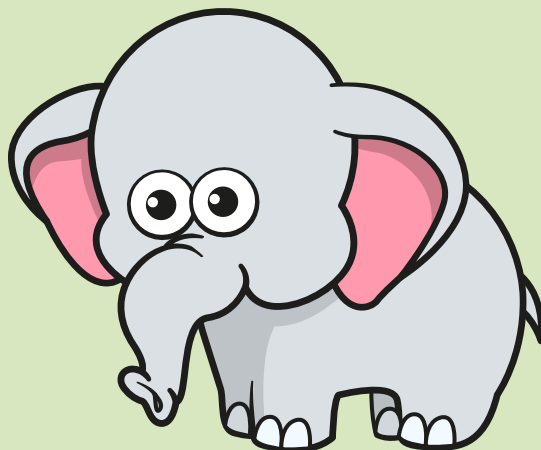
8 Is this true or false?

The train is 12 cm long.



true

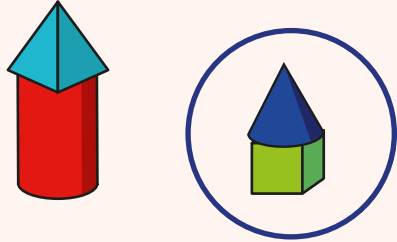
false



Answers



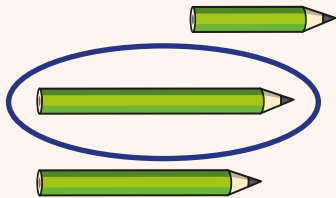
1



2

The giraffe is **taller** than the sheep.

3



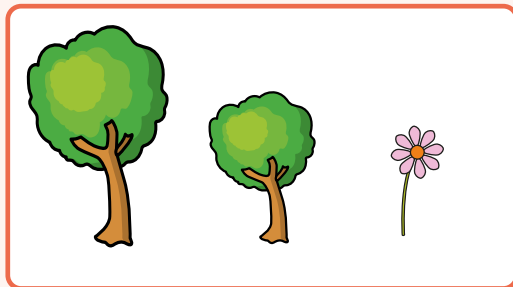
4

4 squares

2 squares

2 squares

5



6

The bottle is 2 squares taller than the tin.



7

The car is **6** cm long.

The bus is **8** cm long.

8

false



MASS AND CAPACITY

White
Rose
Maths



From White Rose Maths schemes for Year 1 Spring Term
BLOCK 4 - MASS AND CAPACITY

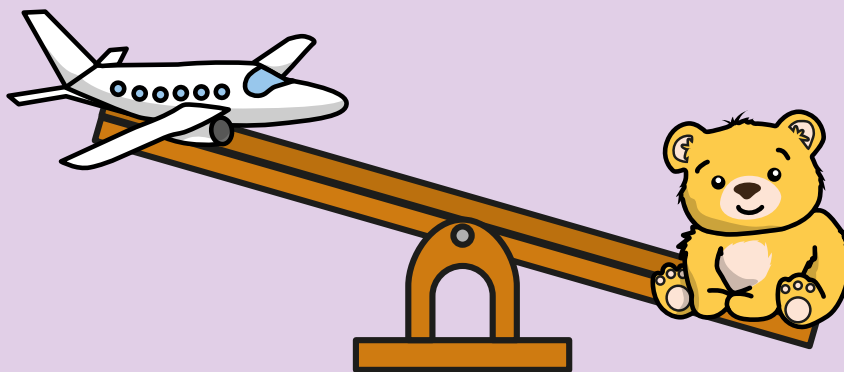
1 Choose a word to complete each sentence.

heavier

lighter

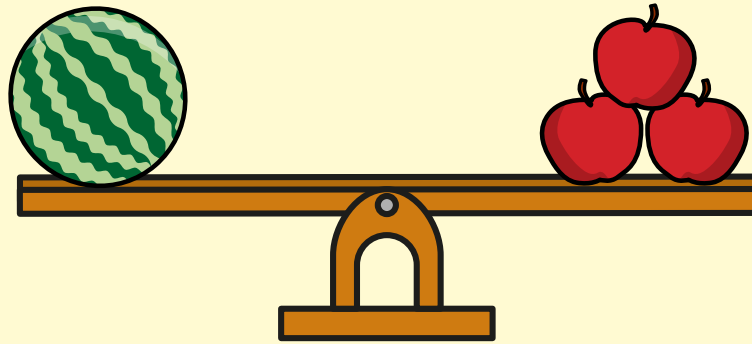


The bat is _____ than the ball.



The plane is _____ than the bear.

2 Tick the correct sentences.

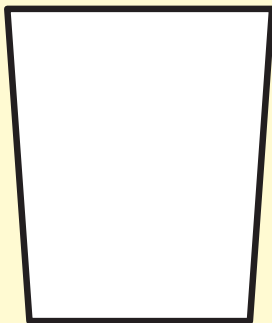


The melon is heavier than 3 apples.

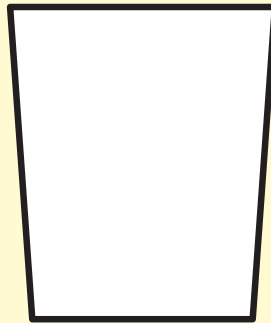
The melon weighs the same as 3 apples.

The melon is heavier than 1 apple.

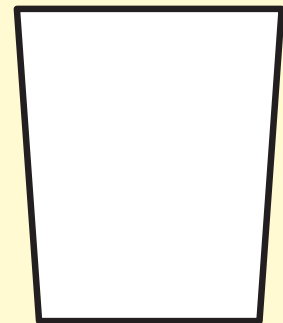
3 Colour the glasses to match each label.



almost empty

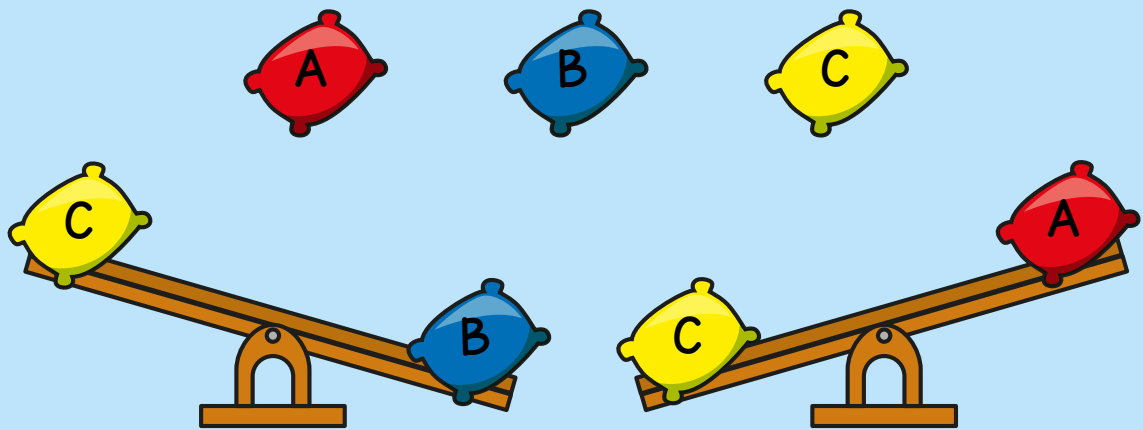


full



almost full

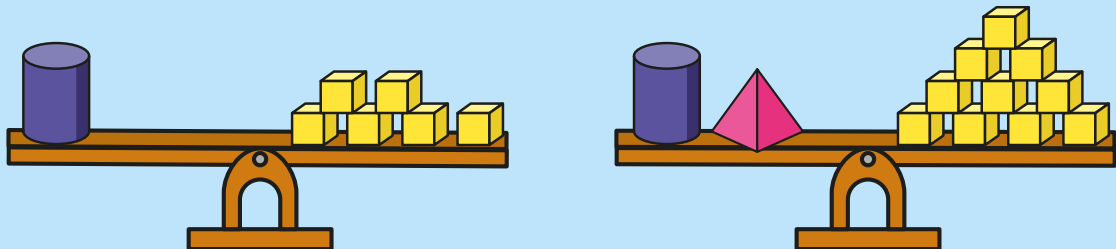
4 Alex is weighing beanbags.



Which beanbag is the heaviest? _____

Which beanbag is the lightest? _____

5

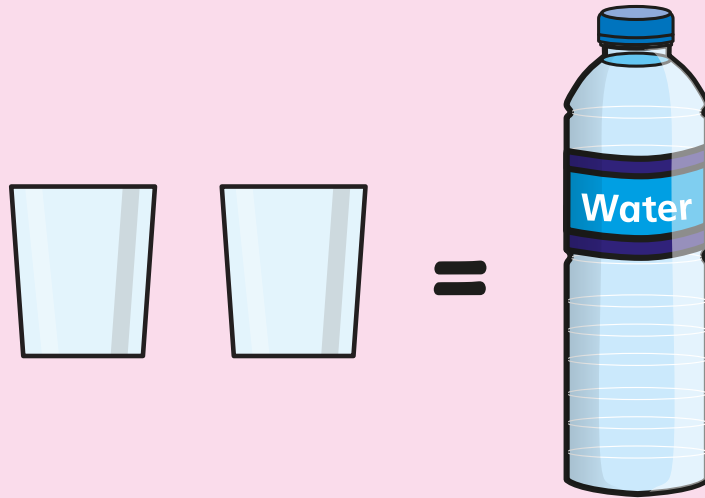


What is the mass of the cylinder?

cubes

What is the mass of the pyramid?

6 It takes 2 glasses to fill 1 bottle.



How many glasses will it take to fill
2 bottles?

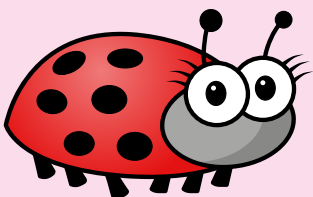
glasses

How many glasses will it take to fill
3 bottles?

glasses

How many glasses can be filled with
4 bottles?

glasses

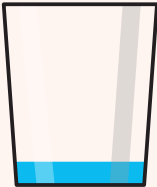
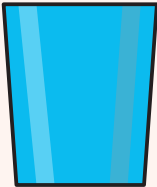
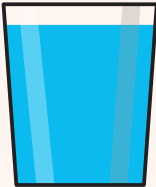


Answers



- 1 The bat is **lighter** than the ball.
The plane is **lighter** than the bear.

- 2 The melon weighs the same as 3 apples.
- The melon is heavier than 1 apple.

- 3
- | | | |
|--|--|--|
|  |  |  |
| almost empty | full | almost full |

- 4 B
A

- 5 6 cubes
4 cubes

- 6 4 glasses
6 glasses
8 glasses

